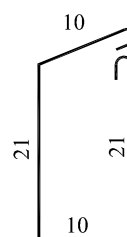
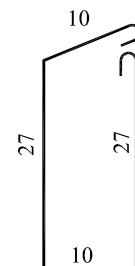
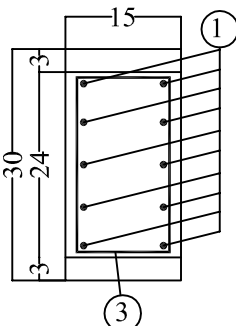
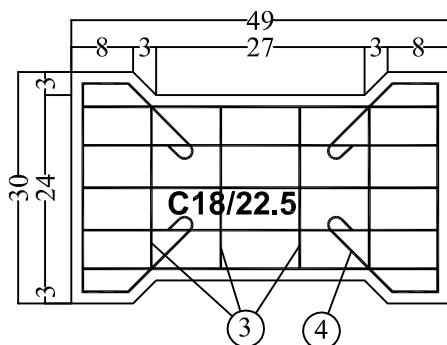


CAPAC PREFABRICAT

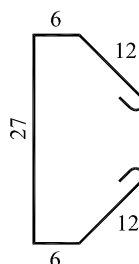
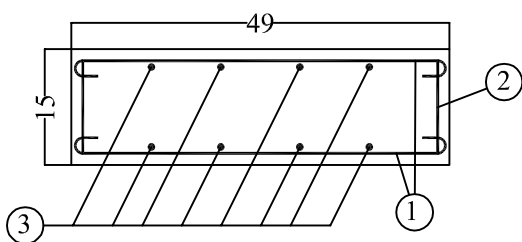


③ 4 OB37Ø6 L=75

② 2 OB37Ø6/buc L=90

① 10 OB37Ø10/buc L=60

④ 4 OB37Ø6/buc L=80



Extras armatura pt. 1buc. capac

Marca	Ø	Nr. buc.	Lung bara(m)	OB37	
				Ø6	Ø10
1	10	10	0.60		6.00
2	6	2	0.90	1.80	
3	6	4	0.75	3.00	
4	6	4	0.80	3.20	
L. totala/Ø				8	6
Gr. kg/ml				0.222	0.617
Gr. totala/Ø				1.776	3.70
TOTAL				5.50	

INTOCMIT/DESENAT	PROIECTAT	Denumire proiect: SISTEMATIZARE VERTICALA SI ILUMINAT EXTERIOR IN INCINTA COMPLEXULUI DE SERVICII SOCIALE COSTESTI, JUDETUL ARGES"
Ing. RADUCANU RADU	Ing. RADUCANU RADU	BENEFICIAR : DIRECTIA GENERALA DE ASISTENTA SOCIALA SI PROTECTIA COPILULUI MUNICIPIUL PITESTI, CALEA DRAGASANI Nr. 8, JUDETUL ARGES
		AMPLASAMENT: ORAS COSTESTI, STR. PROGRESULUI, NR.85
		Titlu plansa:
DATA: 11/2024	SCARA: 1/20	DETALIU RIGOLA CAROSABILA pl. 8